

133-8333-001	4	133-8701-801	6
133-8333-401	4	133-8701-831	7
133-8334-001	4	133-8711-201	5
133-8334-401	4	133-8711-202	5
133-8433-001	3	133-8711-207	5
133-8433-101	3	133-8711-208	5
133-8434-001	3	133-8801-201	5
133-8445-001*	3	133-8801-211	5
133-8445-101*	3	133-8901-801	7
133-8701-201	5	133-8901-811	7
133-8701-211	5	133-8901-821	7
133-8701-301	6	134-1068-021	8
133-8701-311	6	134-1068-031	8
133-8701-401	6	134-1089-001	8

Adapters

Type N Jack to 75 Ohm MCX Jack	8
Type N Jack to 75 Ohm MCX Plug	8
Type N Plug to 75 Ohm MCX Jack	8
Type N Plug to 75 Ohm MCX Plug	8
Between-Series Matching Pad 50 Ohm MCX Bulkhead Jack	8
Jack to Jack	7
Jack to Plug	7
Plug to Plug	7

Bulkhead Jack Receptacle	6
End Launch Jack Receptacle	6
Jack Precision Load	7
Right Angle Crimp Type Plug -	3
Right Angle Jack Receptacle	6
Specifications	2
Straight Crimp Type Bulkhead Jack	4
Straight Crimp Type Jack	4
Straight Crimp Type Plug	3
Straight Jack Receptacle	5
Straight Plug Receptacle	5
Surface Mount Jack Receptacle	5

MCX - 75 Ohm Connectors

Specifications



INCHES (MILLIMETERS)
CUSTOMER DRAWINGS AVAILABLE UPON REQUEST

ELECTRICAL RATINGS

Impedance: 75 Ohms

Frequency Range: 0-6 GHz

VSWR: (f = GHz)

	Straight Cabled Connectors	Right Angle Cabled Connectors
RG-179 cable	1.13 + .04f	1.07 + .04f
In-series adapters	1.07 + .03f	
Between series adapters, loads ...	1.05 + .01f	
Matching pad	1.05 + .05f	
Uncabled receptacles	N/A	

Working Voltage: (Vrms maximum)[†]

Connectors for Cable Type	Sea Level	70K Feet
RG-179	335	85
Uncabled receptacles, adapters	335	85
Loads, matching pad	N/A	

Dielectric Withstanding Voltage: (VRMS minimum at sea level)[†]

Connectors for RG-179	1000
Uncabled receptacles, adapters	1000
Loads, matching pad	N/A

Corona Level: (Volts minimum at 70,000 feet)[†]

Connectors for RG-179	250
Uncabled receptacles, adapters	250
Loads, matching pad	N/A

Insertion Loss: (dB maximum, tested at 1 GHz)

Straight cable connectors	0.1 dB
Right angle cable connectors	0.2 dB
Uncabled receptacles, adapters, matching pad	N/A

Insulation Resistance: 1000 megohms minimum

Contact Resistance: (milliohms maximum)

	Initial	After Environmental
Center contact (straight cabled connectors, uncabled receptacles)	5.0	8.0
Center contact (right angle cabled connectors)	5.0	15.0
Center contact (loads, matching pads)	N/A	
Outer contact	1.0	1.5
Braid to body (gold plated connectors)	1.0	N/A

RF Leakage: (dB typical tested at 2.5 GHz)

Cable connectors	-55 dB typical
Uncabled receptacles, adapters, loads, matching pads	N/A

RF High Potential Withstanding Voltage: (Vrms minimum, tested at 4 and 7 MHz)[†]

Connectors for RG-179	700
Uncabled receptacles, adapters	600
Loads, matching pad	N/A

Power Rating: (Loads and matching pad only) 1.0 watt at +25°C derated linearly to 0.5 watt at +125°C

MECHANICAL RATINGS

Engagement Design: Compatible with CECC 22220, Series MCX 50 Ohm

Engagement Force: 5.6 pounds maximum axial force

Disengagement Force: 3 pounds typical axial force, 1 pound min.

Contact Retention: 2.3 pounds min. axial force (captivated contacts)
1 inch-ounce min. torque (uncabled receptacles)

Cable Retention: **Axial Force*** **Torque**
(pounds) (in-oz)

Connectors for RG-179	20	N/A
Connectors for RG179 DS	25	N/A

*or cable breaking strength whichever is less

ENVIRONMENTAL RATINGS (Meets or exceed the applicable paragraph of MIL-C-39012)

Durability: 500 cycles minimum

Temperature Range: All connectors: - 65°C to + 165°C

Loads and matching pads: - 65°C to + 125°C

Thermal Shock: MIL-STD-202, Method 107, Condition F

Temperature Coefficient: Loads and matching pad: +/- 300ppm/°C

Corrosion: MIL-STD-202, Method 101, Condition B

Shock: MIL-STD-202, Method 213, Condition B

Vibration: MIL-STD-202, Method 204, Condition B

Moisture Resistance: MIL-STD-202, Method 106

MATERIAL SPECIFICATIONS

Bodies: Brass per QQ-B-626, gold plated** per MIL-G-45204 .00001" min. Interface spring - beryllium copper per QQ-C-530, gold plated per MIL-G-45204 .00003" min.

Contacts: Male - brass per QQ-B-626 or beryllium copper per QQ-C-530, gold plated per MIL-G-45204 .00003" min.

Female - beryllium copper per QQ-C-530, gold plated per MIL-G-45204 .00003" min.

Insulators: PTFE fluorocarbon per ASTM D 1710 and ASTM D 1457

Expansion Caps: Brass per QQ-B-613, gold plated per MIL-G-45204 .00001" min.

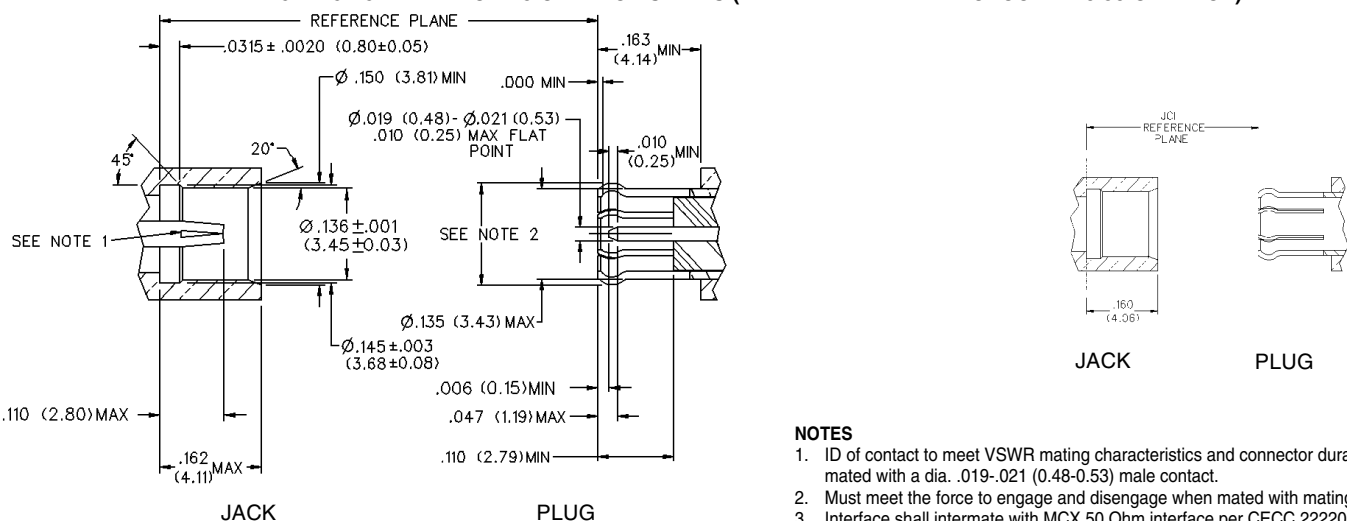
Crimp Sleeves: Copper per WW-T-799, gold plated per MIL-G-45204 .00001" min.

Mounting Hardware: Brass (nuts) per QQ-B-626 or phosphor bronze (lockwashers) QQ-B-750, gold plated per MIL-G-45204 .00001" min.

[†]Avoid user injury due to misapplication.

** All gold plated parts include a .00005" min. nickel underplate barrier layer.

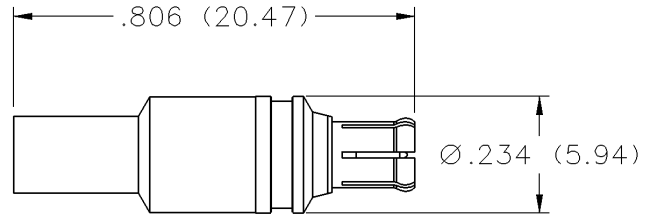
MATING ENGAGEMENT FOR 75 OHM MCX SERIES (INTERMATEABLE WITH CECC 22220 50 OHM MCX)



NOTES

1. ID of contact to meet VSWR mating characteristics and connector durability when mated with a dia. .019-.021 (0.48-0.53) male contact.
2. Must meet the force to engage and disengage when mated with mating part.
3. Interface shall intermate with MCX 50 Ohm interface per CECC 22220.

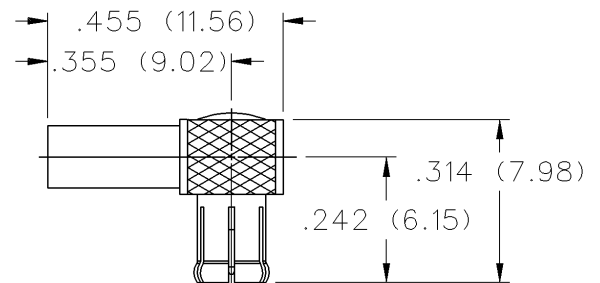
Straight Crimp Type Plug - Solder or Crimp Captivated Contact



CABLE TYPE	GOLD PLATED
RG-179	133-8433-001
RG-179DS	133-8434-001
Belden 735A	133-8445-001*

Assembly instructions page 147.
See page 132 for Cable Assembly Tools.
*Available September 2000.

Right Angle Crimp Type Plug - Captivated Contact



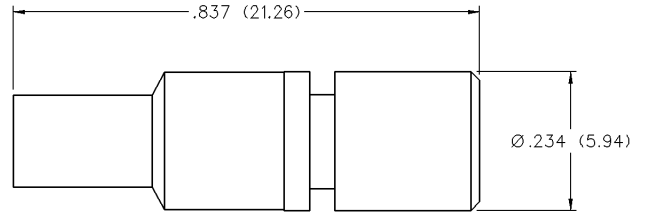
CABLE TYPE	GOLD PLATED
RG-179	133-8433-101
RG-179DS	133-8434-101
Belden 735A	133-8445-101*

Assembly instructions page 149 .
See page 132 for Cable Assembly Tools.
*Available September 2000.

MCX - 75 Ohm Connectors

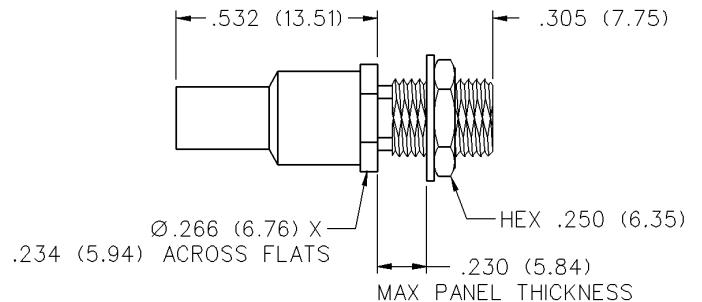
For Flexible Cable

Straight Crimp Type Jack - Solder or Crimp Captivated Contact



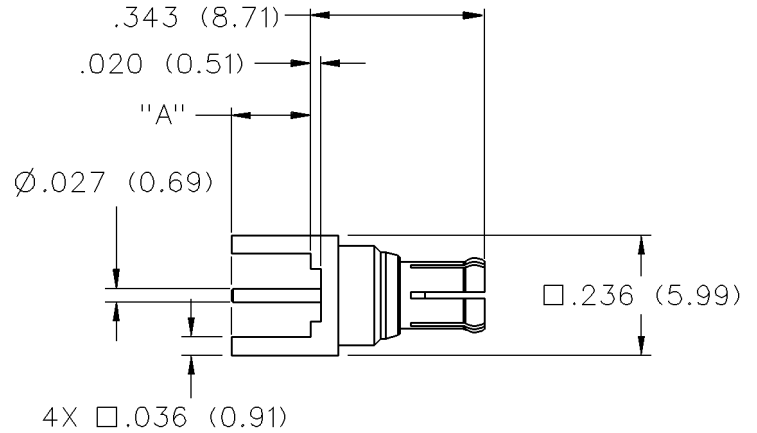
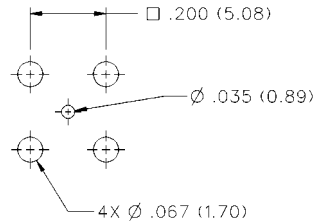
CABLE TYPE	GOLD PLATED
RG-179	133-8333-001
RG-179DS	133-8334-001

Straight Crimp Type Bulkhead Jack - Solder or Crimp Captivated Contact



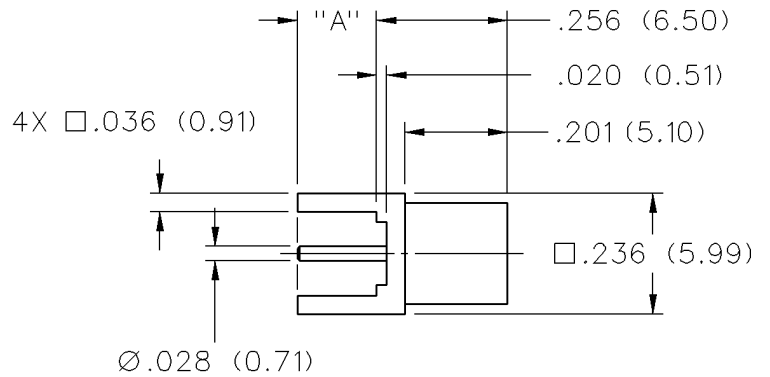
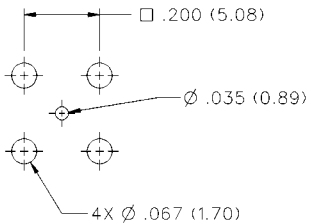
CABLE TYPE	GOLD PLATED
RG-179	133-8333-401
RG-179DS	133-8334-401

Straight Plug Receptacle



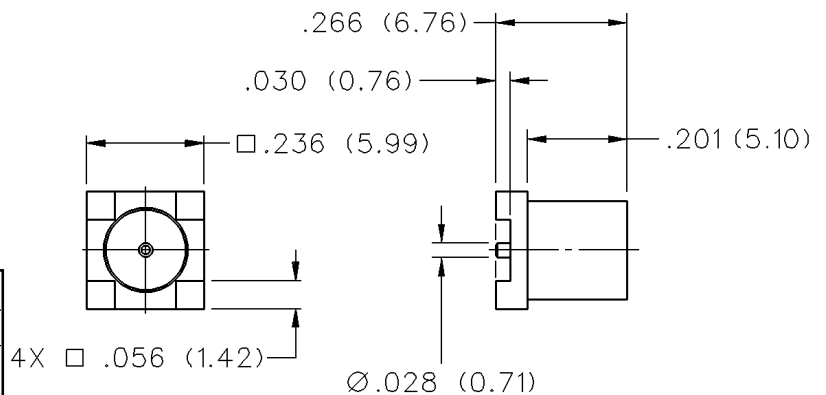
"A"	GOLD PLATED
.155 (3.80)	133-8801-201
.110 (2.70)	133-8801-211

Straight Jack Receptacle



"A"	GOLD PLATED
.155 (3.80)	133-8701-201
.110 (2.70)	133-8701-211

Surface Mount Jack Receptacle



GOLD PLATED		PACKAGING
133-8711-201	133-8711-207	Bulk Packs
133-8711-202	133-8711-208	Tape and Reel 750 pieces

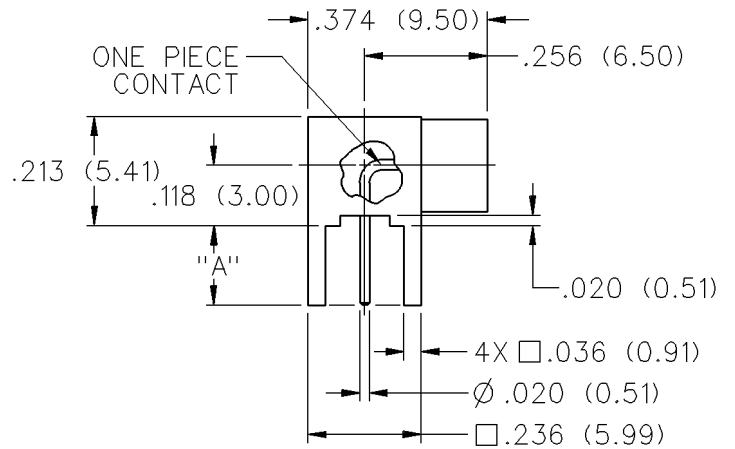
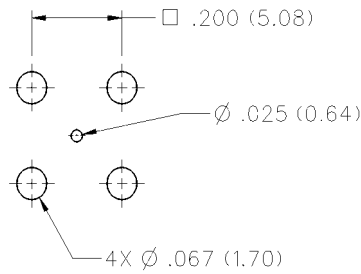
MCX - 75 Ohm Connectors

PC Mount



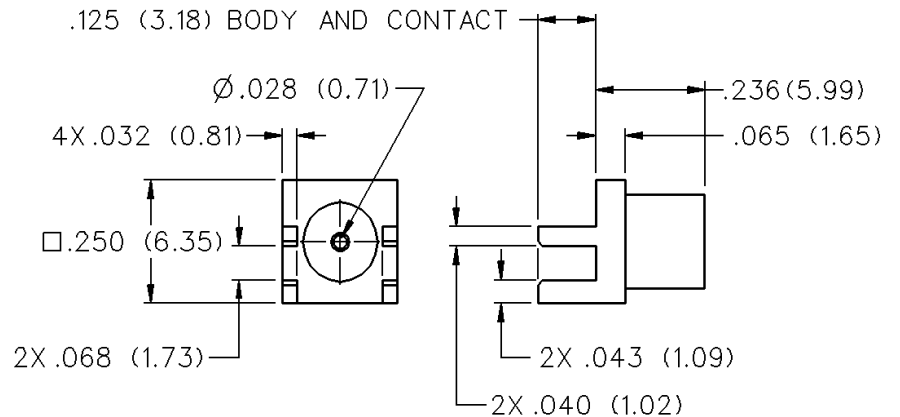
INCHES (MILLIMETERS)
CUSTOMER DRAWINGS AVAILABLE UPON REQUEST

Right Angle Jack Receptacle



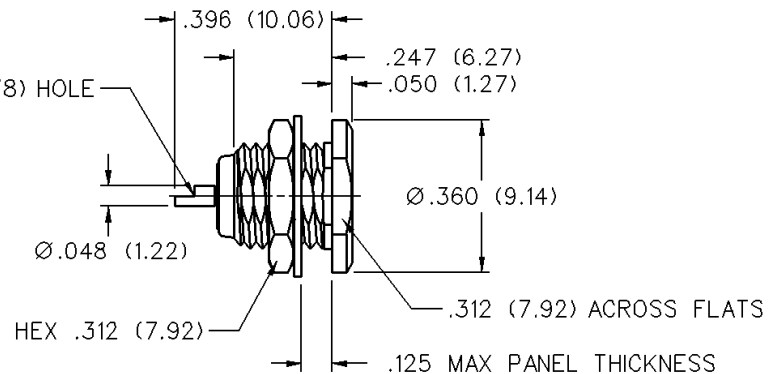
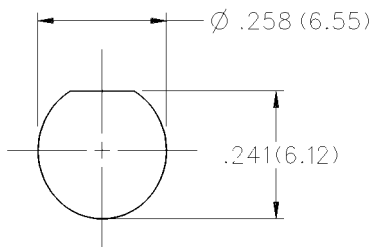
"A"	GOLD PLATED
.155 (3.80)	133-8701-301
.110 (2.70)	133-8701-311

End Launch Jack Receptacle



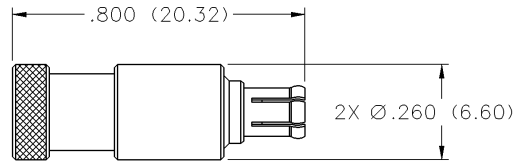
GOLD PLATED
133-8701-801

Bulkhead Jack Receptacle



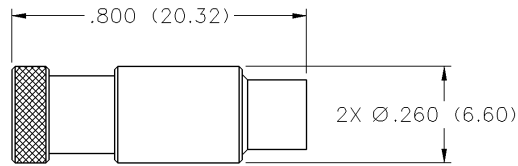
GOLD PLATED
133-8701-401

Plug Precision Load



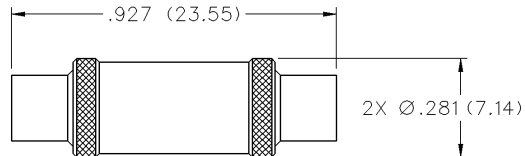
VSWR & FREQ. RANGE	GOLD PLATED
1.05 + .01f (GHz) 0-6 GHz	133-8801-831

Jack Precision Load



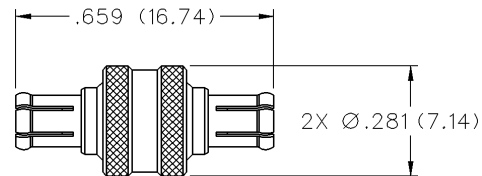
VSWR & FREQ. RANGE	GOLD PLATED
1.05 + .01f (GHz) 0-6 GHz	133-8701-831

Jack to Jack



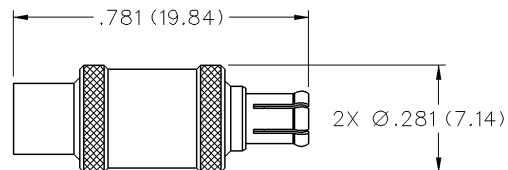
GOLD PLATED
133-8901-801

Plug to Plug



GOLD PLATED
133-8901-811

Jack to Plug



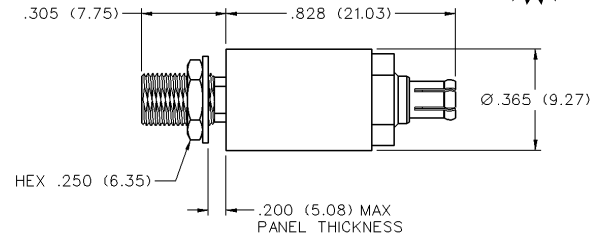
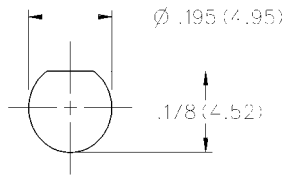
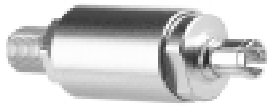
GOLD PLATED
133-8901-821

MCX - 75 Ohm Connectors

Between-Series Adapters

Between-Series Matching Pad

50 Ohm MCX Bulkhead Jack to 75 Ohm MCX Plug



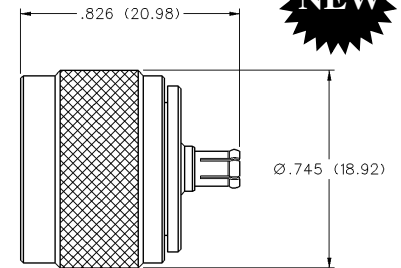
GOLD PLATED
134-1089-001

Mounting hole layout figure 5 page 174.

75 Ohm Type N Plug to 75 Ohm MCX Plug



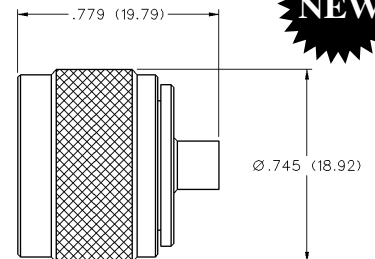
STAINLESS STEEL PASSIVATED
134-1068-001



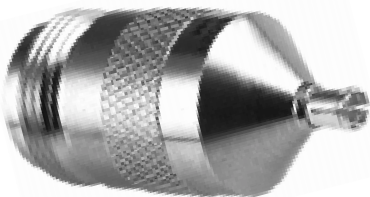
75 Ohm Type N Plug to 75 Ohm MCX Jack



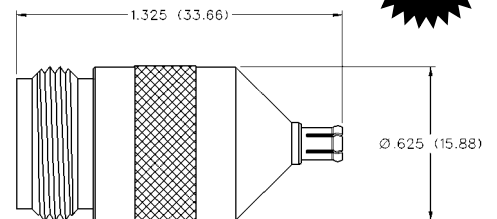
STAINLESS STEEL PASSIVATED
134-1068-011



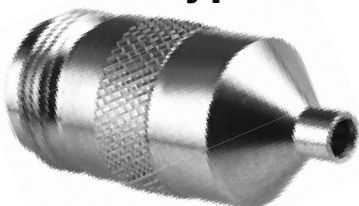
75 Ohm Type N Jack to 75 Ohm MCX Plug



STAINLESS STEEL PASSIVATED
134-1068-021



75 Ohm Type N Jack to 75 Ohm MCX Jack



STAINLESS STEEL PASSIVATED
134-1068-031

